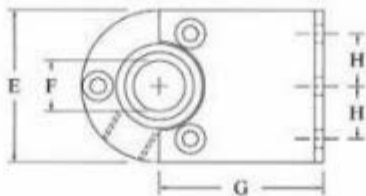


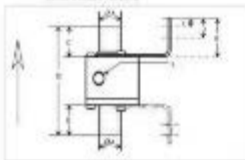
TEKNİK ÖLÇÜLER

PARÇA NO. (Alüminyum & yüksek sıcaklık paslanmaz çelik)	A IN (MM)	B IN (MM)	C IN (MM)	D IN (MM)	E IN (MM)	F IN (MM)	G IN (MM)	H IN (MM)	I IN (MM)	J IN (MM)	K IN (MM)	L*
30000 30000S 30000HTS 30000S-316L 30000HTS-316L	0.75" (19.0)	1.00" (25.5)	1.00" (25.5)	3.94" (100)	1.95" (49.5)	0.55" (14.0)	N/A	N/A	N/A	N/A	1.97" (50.0)	1/4" NPT
30001 30001S, 30001T 30001TS 3001HTS 3001THTS 30001S-316L 30001HST-316L	1.00" (25.4)	1.38" (35.1)	1.50" (38.1)	4.88" (124)	2.24" (56.8)	0.75" (19.0)	2.17" (55.0)	0.73" (18.5)	0.39" (10.0)	1.58" (40)	1.97" (50.0)	¼" NPT
30002 30002S, 30002T 30002TS 30002HTS 30002THTS 30002S-316L 30002HTS-316L	1.25" (31.8)	1.38" (35.1)	1.50" (38.1)	4.88" (124.0)	2.49" (63.2)	1.00" (25.4)	2.21" (56.3)	0.73" (18.5)	0.39" (10.0)	1.77" (45)	2.17" (55.0)	¼" NPT
30003 30003S 30003T 30003TS 30003HTS 30003THTS 30003S-316L 30003HTS-316L	1.50" (38.1)	1.38" (35.1)	1.50" (38.1)	4.875" (124)	2.75" (69.9)	1.125" (28.6)	2.15" (54.5)	0.89" (22.5)	0.39" (10.0)	1.58" (40)	1.97" (50.0)	3/8" NPT
30004 30004S 30004T 30004TS 30004HTS 30004THTS 30004S-316L 30004HTS-316L	2.00" (50.8)	1.38" (35.1)	1.5" (38.1)	4.88" (124.0)	3.21" (81.6)	1.75" (44.5)	2.39" (60.7)	1.18" (30)	0.39" (10.0)	1.58" (40)	1.97" (50.0)	3/8" NPT
30005,30005S, 30005S 30005HTS	2.5" (63.5)	1.38" (35.1)	1.5" (38.1)	5.29" (134.5)	3.94" (100.0)	2.19" (55.6)	-	-	-	-	1.97" (50.0)	3/8" NPT
30006 30006S 30006TS 30006HTS 30006THTS	3.0" (76.2)	1.58" (40)	1.58" (40)	5.59" (142.0)	4.33" (110.0)	2.68" (68.0)	-	-	-	-	1.97" (50.0)	1/2" NPT

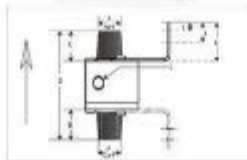
Top View



Series 30000 - 30005
Series 30025 - 30045



Series 30017 - 3004T Threaded
Series 30017S - 3004TS Threaded



Series 30000 - 30005
Series 30015 - 30045



Series 3002T - 3004T Threaded
Series 3002TS - 3004TS Threaded

